



DLV7500 DLV8500 Series



Features

Low vibration, low noise, and easy gripping in a compact design

- The easily visible torque reach light goes on when the set torque is reached
- The combination of an advanced clutch design and the auto-stop circuit assures torque accuracy
- The long life motor with a yoke made of advanced materials further assures a long service life
- Compliant with CE standard
- ESD (electrostatic discharge) protection structure (DLV7500-BKE/DLV8500-BKE)

DLV7500-MKE DLV7550-MKE

DLV8500-BKE DLV8550-MKE

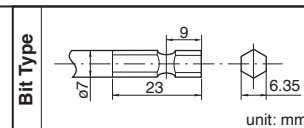
DLV4511-GGB

DLR1510-JE

Specifications

Specifications		Standard		High Torque	Standard		High Torque		
Electric Screwdriver	Model	Standard Type	DLV7530-MKE	DLV7540-MKE	DLV7550-MKE	DLV8530-MKE	DLV8540-MKE	DLV8550-MKE	
		ESD Protection Type	DLV7530-BKE	DLV7540-BKE	DLV7550-BKE	DLV8530-BKE	DLV8540-BKE	DLV8550-BKE	
	Starting Method		Lever Start			Push to Start			
	Power Source		From dedicated controller						
	Torque Adjustment		Stepless						
	Torque (Nm [lbf-in])		0.5 to 1.7 [4.4 to 15.1]	3.5	1.2 to 2.7 [10.6 to 23.9]	2.0 to 4.5 [17.7 to 39.8]	0.5 to 1.7 [4.4 to 15.1]	1.2 to 2.7 [10.6 to 23.9]	2.0 to 4.5 [17.7 to 39.8]
	Free Speed (min ⁻¹)		1100	700	500	1100	700	500	
	Screw Size (mm)	Machine Screw	2.6 to 4.0	3.5 to 5.0	4.5 to 6.0	2.6 to 4.0	3.5 to 5.0	4.5 to 6.0	
		Tapping Screw	2.3 to 3.5	3.0 to 4.0	4.0 to 5.0	2.3 to 3.5	3.0 to 4.0	4.0 to 5.0	
	Mass (g [lbs])		650 [1.43]		750 [1.65]	650 [1.43]		750 [1.65]	
	Cord Length (m)		3						
	Rated Operation		ON: 0.5 seconds / OFF: 3.5 seconds						

	Model	DLV4511-GGB	DLR1510-JE
		Stepless speed adjustment 80 to 100% Soft start: adjustable time setting of slow speed (max. 3 sec.) External output signals: start and torque up Electro-static discharge(ESD) control	Screw counting: OK lamp and buzzer for notification Variable non-operation time Setting protection by key lock switch Setting by touch switch for easy operation External output signals: Start, Torque up, Count up & Cycle OK
Controller	Power Source	230 V AC, 50/60 Hz	
	Mass (g [lbs])	3500 [7.72]	5100 [11.24]
	Power Cord Length (m)	2	
	Plug Shape	Europe	



ESD protection measure

Measurement Point		Conventional Product	DLV7500 DLV8500-BKE
Handle	Static Electricity (V)	350	5
	Surface Resistance (Ω)	more than 10 ¹³	10 ⁴
Lever Switch	Static Electricity (V)	350	2
	Surface Resistance (Ω)	more than 10 ¹³	10 ⁴
Forward / Reverse Switch	Static Electricity (V)	25	2
Connection Cord	Static Electricity (V)	110	5
	Surface Resistance (Ω)	more than 10 ¹³	10 ¹⁰

Part	Material
Handle Lever Switch	Synthetic resin with carbon fiber
Power Cable	Anti-static material

*Measurement conditions (Temperature: 22°C Humidity: 66%)

(1) Static electricity

- Earth the measurement equipment and measuring person.
- Grip the screwdriver five times using Ansel Edmont electronic control glove.
- Turn on the switch of the screwdriver.
- Measure each part of the screwdriver using electronic measurement equipment manufactured by Shishido electrostatic Ltd.

(2) Surface resistance

- Measure using Simco Japan surface resistivity measurement equipment.

Standard Accessories

Model		DLV7530/DLV7540 DLV8530/DLV8540	DLV7550-MKE DLV8550-MKE	DLV7550-BKE DLV8550-BKE
Bit NK35	No.1 × 7 × 75	1	-	-
	No.2 × 7 × 75	1	1	1
	No.3 × 7 × 50	-	1	1
Pistol Grip	DLW2300	-	1	-
	DLW2300ESD	-	-	1
Spare Carbon Brush		2		
Connection Cord Straight 3 m (TD01838)		1		
Suspension Bail		1		

Torque Diagrams (for reference)

