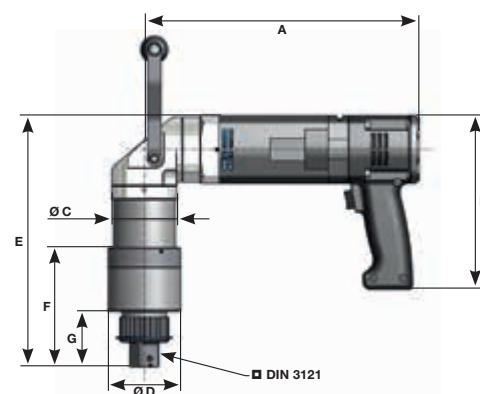


Type	Torque range (Nm)	Speed (U/min) <sup>1</sup>	A (mm)	B (mm)	C (mm)	Ø D (mm)	E (mm)	F (mm)	■ = Output	Weight (kg)
DE1 <b>docu</b> -10 / DE1 <b>docu-plus</b> -10 - 110V	150-1.000	16,8	425	192	85	68,5	145,5	60,5	¾ "	5,7
DE1 <b>docu</b> -10 / DE1 <b>docu-plus</b> -10 - 230V	150-1.000	19,6	425	192	85	68,5	145,5	60,5	¾ "	5,7
DE1 <b>docu</b> -20 / DE1 <b>docu-plus</b> -20 - 110V	250-2.000	9,0	449	192	85	80	132	61,5	1 "	6,8
DE1 <b>docu</b> -20 / DE1 <b>docu-plus</b> -20 - 230V	250-2.000	12,0	449	192	85	80	132	61,5	1 "	6,8
DE1 <b>docu</b> -30 / DE1 <b>docu-plus</b> -30 - 110V	450-3.000	5,9	465	192	85	80	132	61,5	1 "	7,2
DE1 <b>docu</b> -30 / DE1 <b>docu-plus</b> -30 - 230V	450-3.000	8,0	449	192	85	80	132	61,5	1 "	7,2
DE1 <b>docu</b> -36 / DE1 <b>docu-plus</b> -36 - 110V	500-3.600	4,5	465	192	85	80	132	61,5	1 "	7,2
DE1 <b>docu</b> -36 / DE1 <b>docu-plus</b> -36 - 230V	500-3.600	5,2	465	192	85	80	132	61,5	1 "	7,2
DE1 <b>docu</b> -48 / DE1 <b>docu-plus</b> -48 - 110V	700-4.800	3,5	497	192	85	86	161	83,5	1 ½ "	9,0
DE1 <b>docu</b> -48 / DE1 <b>docu-plus</b> -48 - 230V	700-4.800	4,6	497	192	85	86	161	83,5	1 ½ "	9,0
DE1 <b>docu</b> -80 / DE1 <b>docu-plus</b> -80 - 110V <sup>2</sup>	1.200-8.000	2,0	565	192	75	101	211,5	106	1 ½ "	14,5
DE1 <b>docu</b> -80 / DE1 <b>docu-plus</b> -80 - 230V <sup>2</sup>	1.200-8.000	2,5	565	192	75	101	211,5	106	1 ½ "	14,5

## The angle version

The compact solution for installation operations in tight spaces. The angle version works effortlessly even in the most hard to reach places. The tool is perfectly balanced and has a secure feel in the operator's hands, due to its angular design.

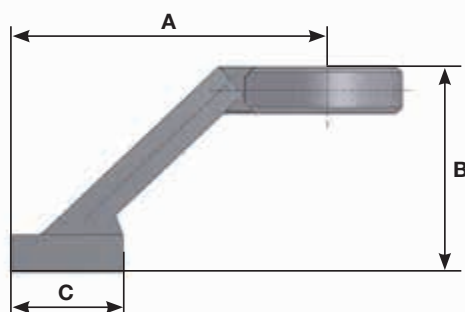


Type	Torque range (Nm)	Speed (U/min) <sup>1</sup>	A (mm)	B (mm)	C (mm)	Ø D (mm)	E (mm)	F (mm)	G (mm)	■ = Output	Weight (kg)
DE1 <b>docu</b> -10-W / DE1 <b>docu-plus</b> -10-W - 110V	150-1.000	16,8	303	192	72	68,5	253	145,5	60,5	¾ "	7,1
DE1 <b>docu</b> -10-W / DE1 <b>docu-plus</b> -10-W - 230V	150-1.000	16,8	303	192	72	68,5	253	145,5	60,5	¾ "	7,1
DE1 <b>docu</b> -20-W / DE1 <b>docu-plus</b> -20-W - 110V	250-2.000	9,0	303	192	72	80	277,5	132	61,5	1 "	8,3
DE1 <b>docu</b> -20-W / DE1 <b>docu-plus</b> -20-W - 230V	250-2.000	9,0	303	192	72	80	277,5	132	61,5	1 "	8,3
DE1 <b>docu</b> -30-W / DE1 <b>docu-plus</b> -30-W - 110V	450-3.000	5,9	303	192	72	80	293,5	132	61,5	1 "	8,6
DE1 <b>docu</b> -30-W / DE1 <b>docu-plus</b> -30-W - 230V	450-3.000	5,9	303	192	72	80	293,5	132	61,5	1 "	8,6
DE1 <b>docu</b> -36-W / DE1 <b>docu-plus</b> -36-W - 110V	500-3.600	4,5	303	192	72	80	293,5	132	61,5	1 "	8,6
DE1 <b>docu</b> -36-W / DE1 <b>docu-plus</b> -36-W - 230V	500-3.600	4,5	303	192	72	80	293,5	132	61,5	1 "	8,6
DE1 <b>docu</b> -48-W / DE1 <b>docu-plus</b> -48-W - 110V	700-4.800	3,5	303	192	72	86	326	161	83,5	1 ½ "	9,2
DE1 <b>docu</b> -48-W / DE1 <b>docu-plus</b> -48-W - 230V	700-4.800	3,5	303	192	72	86	326	161	83,5	1 ½ "	9,2
DE1 <b>docu</b> -80-W / DE1 <b>docu-plus</b> -80-W - 110V <sup>2</sup>	1.200-8.000	2,0	303	192	72	101	393	211,5	106	1 ½ "	17,0
DE1 <b>docu</b> -80-W / DE1 <b>docu-plus</b> -80-W - 230V <sup>2</sup>	1.200-8.000	2,5	303	192	72	101	393	211,5	106	1 ½ "	17,0

<sup>1</sup> Idle speed at setting 99

<sup>2</sup> Divisible suspension included in the scope of delivery (see optional accessories)

# Standard reaction arms



DE1 <i>docu</i> -10	150	100	90	1,5
DE1 <i>docu</i> -20	150	100	90	1,85
DE1 <i>docu</i> -30	190	100	90	2,4
DE1 <i>docu</i> -36	190	100	90	2,4
DE1 <i>docu</i> -48	210	130	90	3,25
DE1 <i>docu</i> -80	250	165	140	7,38

## Optional accessories

Various accessories including fittings, extensions, sockets, steel rings which can be welded or reaction arms are available both as standard and custom models.



## Mobile measuring unit **TC1**

The TC1 monitors the applied torque and thus the on-site bolting process. The system operates without cable during the bolting process and can be fitted with ease on the bolting tool.



Type	Measurement range min. - max.		Compatible with
	Nm	ft-lbs	
<b>TC1 – 11</b>	110 - 1.100	81 - 811	DE1 <i>docu</i> -10 DE1 <i>docu-plus</i> -10
<b>TC1 – 41</b>	410 - 4.100	302 - 3.024	DE1 <i>docu</i> -20, -30, -36 DE1 <i>docu-plus</i> -20, -30, -36
<b>TC1 – 55</b>	550 - 5.500	406 - 4.056	DE1 <i>docu</i> -48 DE1 <i>docu-plus</i> -48